

Circular headrig KS-602/604



Rigid and environmental friendly

The machine is used to cut primary boards in combination with a chipper canter. It can operate with 2 or 4 sawblades with a diameter up to 1250 mm

The design of KS-602/604 is rigid and simple which means few moving parts and by that high dependability and lifetime.

The machine is well protected with covers and gives high personnel safety and good environmental qualities.

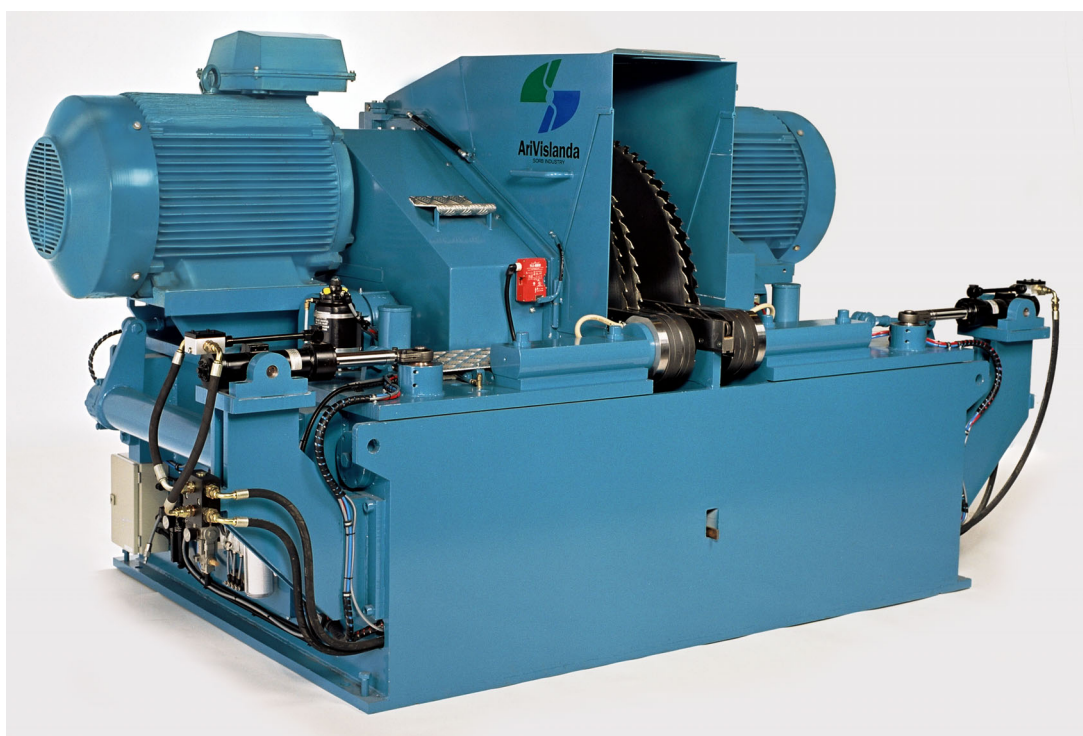
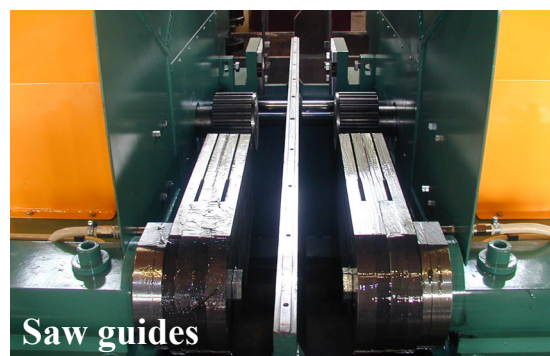
High sawing accuracy

The sawblades in KS-602/604 are settable by means of electro-hydraulic networks which implies that the cant height and the thickness of outer boards can be quickly changed between each log. The inner boards, at 4-board sawing, are fixed setted.

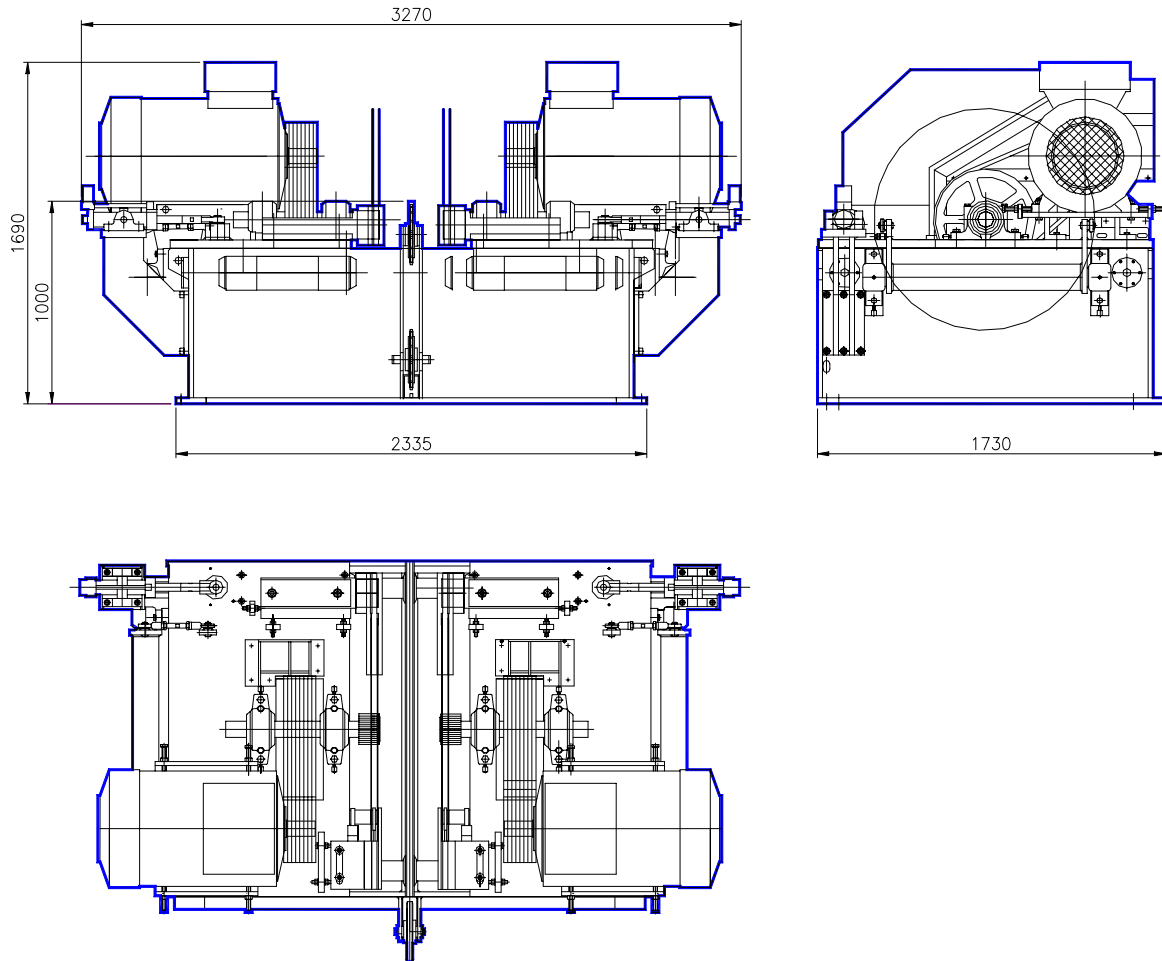
Floating saws and air-water cooled saw guides promote the good sawing accuracy and the long operating time for both sawblades and saw guides. This can be further improved by installing Flotex floating guides.

Safe feeding

The logs are fed trough the machine by means of a sharp chain. This, in combination with a pressure bar that presses the log against the chain and driven vertical out feed rollers on the chipper canter, gives a safe and smooth feed trough the machine.



Dimensions



Technical data

Max feed speed	120 m/min
Max log diameter (envelope at 275 mm cant height)	550 mm
Max cutting height (from feed level)	515 mm
Sawblade diameter	1000-1250 mm
Sawblade thickness/kerf.....	3.6/5.0 mm
Water consumption pressure	4.5 ±0.2 bar
flow (2/4 sawblades)	1.2/2.4 l/min
Air consumption pressure.....	6 bar
flow (2/4 sawblades)	1000/1200 l/min
Distance between sawblades (std)	95-410 mm
Distance between fixed setted sawblades	16-52 mm
Main motor power 2 sawblades.....	2x 55-75 kW
4 sawblades.....	2x90-132 kW
RPM (sawblades Ø1250 mm)	730 rpm
Weight (incl. motors) 2/4 sawblades.....	ca 5.0/6.0 ton

We reserve the right to make changes



Address
AriVislanda AB
Box 80
340 30 VISLANDA

Address
AriVislanda AB
Box 249
891 26 ÖRNSKÖLDSVIK

Phone, Vislanda
+46 472 343 45
Fax, Vislanda
+46 472 343 49

Phone, Ö-vik
+46 660 868 00
Fax, Ö-vik
+46 660 199 22

E-mail
info@arivislanda.com
Web site
www.arivislanda.com