

# Log turner VLT-600

## Log infeed LI-600



### Double carrier chains

The log turner and infeed conveyor are built on a frame of square girders and steel plates. The double parallel chain is equipped with spiked carriers, pitch 380 mm. The carrier chain runs on slide strips of Non-Fric material.

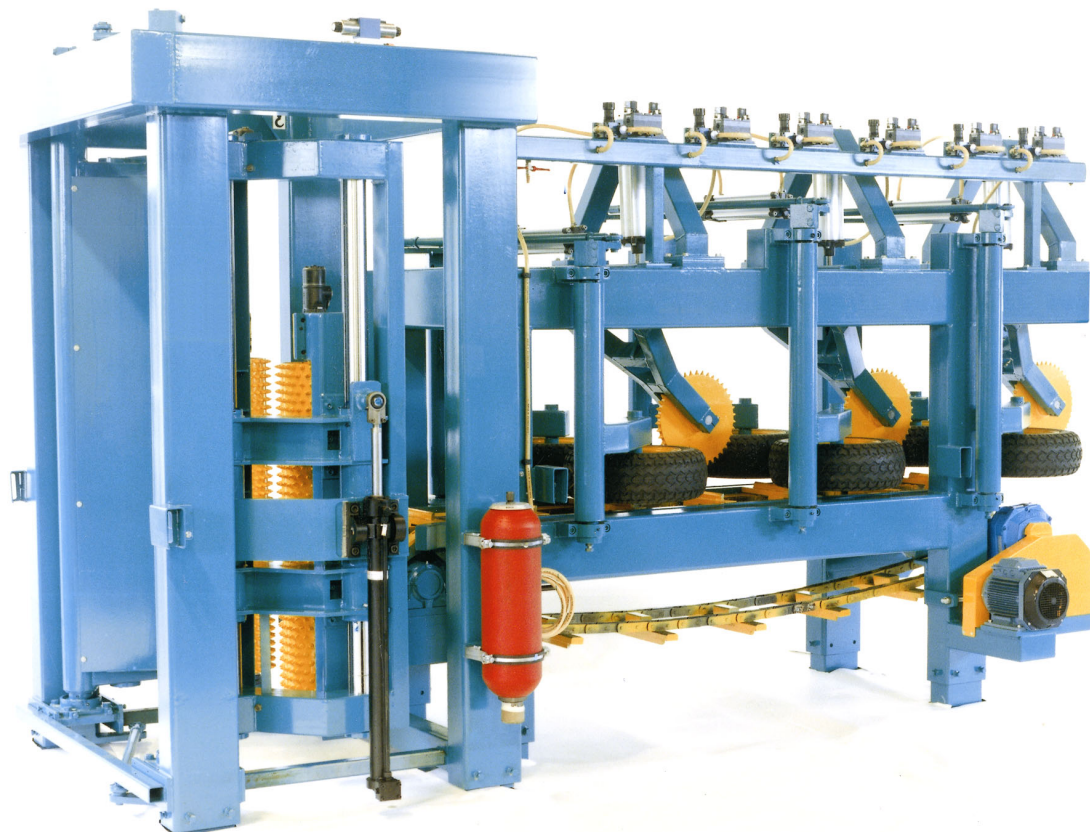
### Servo hydraulic cylinders

The log rotating mechanism consists of two vertical spiked rollers with separate drives and hydraulic cylinders for centring. The sliding surfaces of the round guides are lubricated with grease. The spiked rollers are vertically set by servo hydraulic cylinders mounted on the frame. One servo cylinder for each spiked roller. When turning the log one roller moves up and the other moves down. The shape of the log determines which way the is turned.

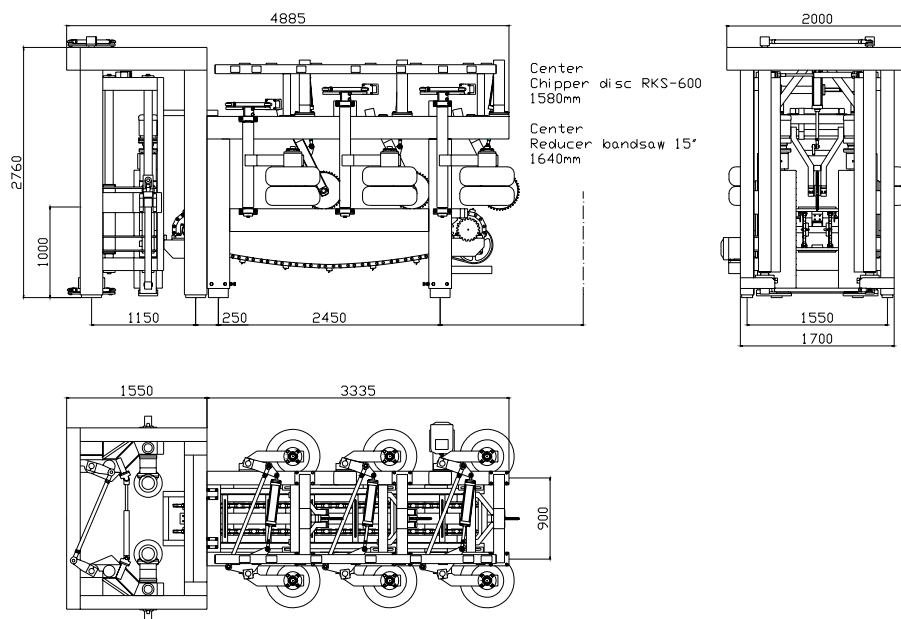
### Pressure rollers

Three pairs of solid rubber wheels operated with pneumatic cylinder. At least one pair is driven . The log infeed conveyor has an overhead frame of square girders, where pressure rollers are mounted. The rollers are operated by pneumatic cylinders.

The conveyor chain is driven by an electric motor via V-belt and pin-gear. The log turning rollers, rubber tyres and pressure rollers are controlled by photo cells.



## Dimensions



## Technical data

Log diameter ..... 80-600 mm  
 Log length ..... standard 2.4-6.3 m  
 Sweep ..... 10 mm/m  
 (maximum 60 mm at max diameter and length)

Air consumption ..... 180 l/stock  
 Air pressure ..... 6 bar

### Power requirements

Main drive motors ..... 5.5-11 kW  
 Spiked rollers ..... 2x3 kW  
 Centring arms ..... 2x1.1 kW

Weight, VLT-600 ..... approx 5.2 ton  
 Weight, LI-600 ..... approx 5.2 ton

## Accessories

- Driven centring rubber tyres
- Hydraulic power pack for log turning servo system
- Bogie on wheel unit number three
- Swivelling log turning rollers operated by three position cylinders
- Side shifting by hydraulic cylinder on parallel shaft



We reserve the right to make changes

Address  
 AriVislanda AB  
 Box 80  
 SE-340 30 VISLANDA

Address  
 AriVislanda AB  
 Box 249  
 SE-891 26 ÖRNSKÖLDSEVIK

Phone, Vislanda  
 +46 472 343 45  
 Fax, Vislanda  
 +46 472 343 49

Phone, Ö-vik  
 +46 660 868 00  
 Fax, Ö-vik  
 +46 660 199 22

E-mail  
 info@arivislanda.com  
 Web  
 www.arivislanda.com