

# Log turner LT-2



## High accuracy

The log rotator turns the log before centring in front of the primary chipper canter. The log is turned with a very high accuracy to the optimal positioning calculated by the scanning and optimisation system.

## Prepositioning

LT-2 has three hydraulically driven spike rolls gripping the log, which secures an efficient and safe centring. The rolls are prepositioned vertically and horizontally which means that the log "is fetched" in the top end. This reduces the risk that the log position is changed prior to the turning moment which is crucial for the infeed precision.

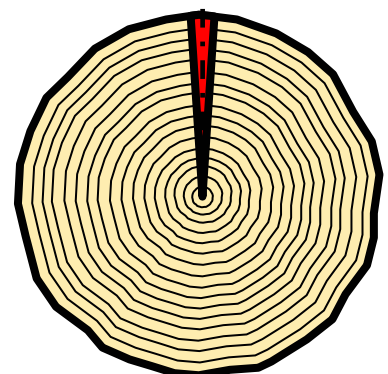
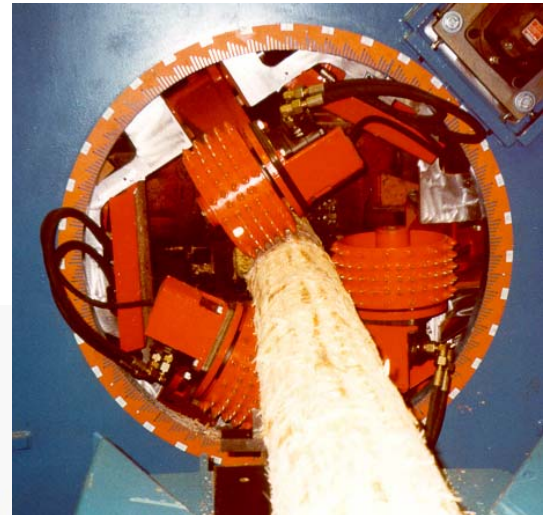
During the rotation the log is positioned to the feeding centre of the next machine.

## Log turning

The turning mechanics is attached to a roller path running on ball bearings and is hydraulically driven. This gives a stable operation even at high rotary speed.

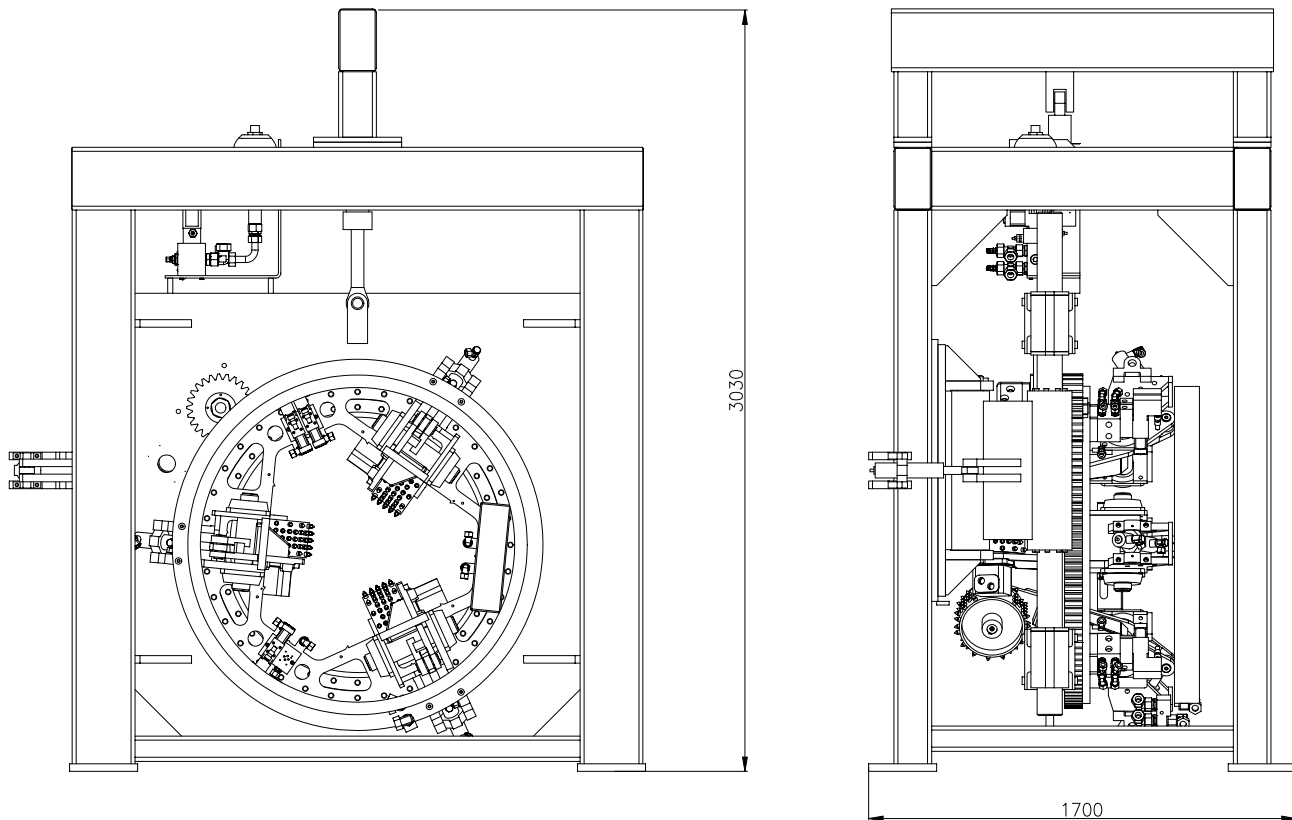
## High capacity

LT-2 can manage to rotate 35 logs per minute, with very high accuracy, to an optimised position.



The rotation accuracy for LT-2 is  $S = 5^\circ$ , i.e. better than  $\pm 1$  minute on an analogue clock.

## Dimensions



## Technical data

Max feed speed .....	150 m/min
Min log diameter .....	100 mm
Max log diameter .....	700 mm
Min log length .....	2,2 m
Min log gap .....	0,3 m
Max number of logs per minute .....	35

### Log turning precision

Log diameter	12 – 16 cm	> 16 cm
Mean error	2°	2°
Standard deviation (1S)	7°	5°

Weight ..... ca 4,5 ton

We reserve the right to make changes



Address  
AriVislanda AB  
Box 80  
340 30 VISLANDA

Address  
AriVislanda AB  
Box 249  
891 26 ÖRNSKÖLDSEVIK

Phone, Vislanda  
+46 472 343 45  
Fax, Vislanda  
+46 472 343 49

Phone, Ö-vik  
+46 660 868 00  
Fax, Ö-vik  
+46 660 199 22

E-mail  
info@arivislanda.com  
Web site  
www.arivislanda.com