

# Feedwork 500-A



## Ahead of rotary gang

The feedwork is designed for centring and infeeding of square cants into circular saws.

The feedrollers are closed and opened automatically by photocell signals. The opening distance between the feedrollers may also be adjusted manually with a crankshaft.

## Welded box frame

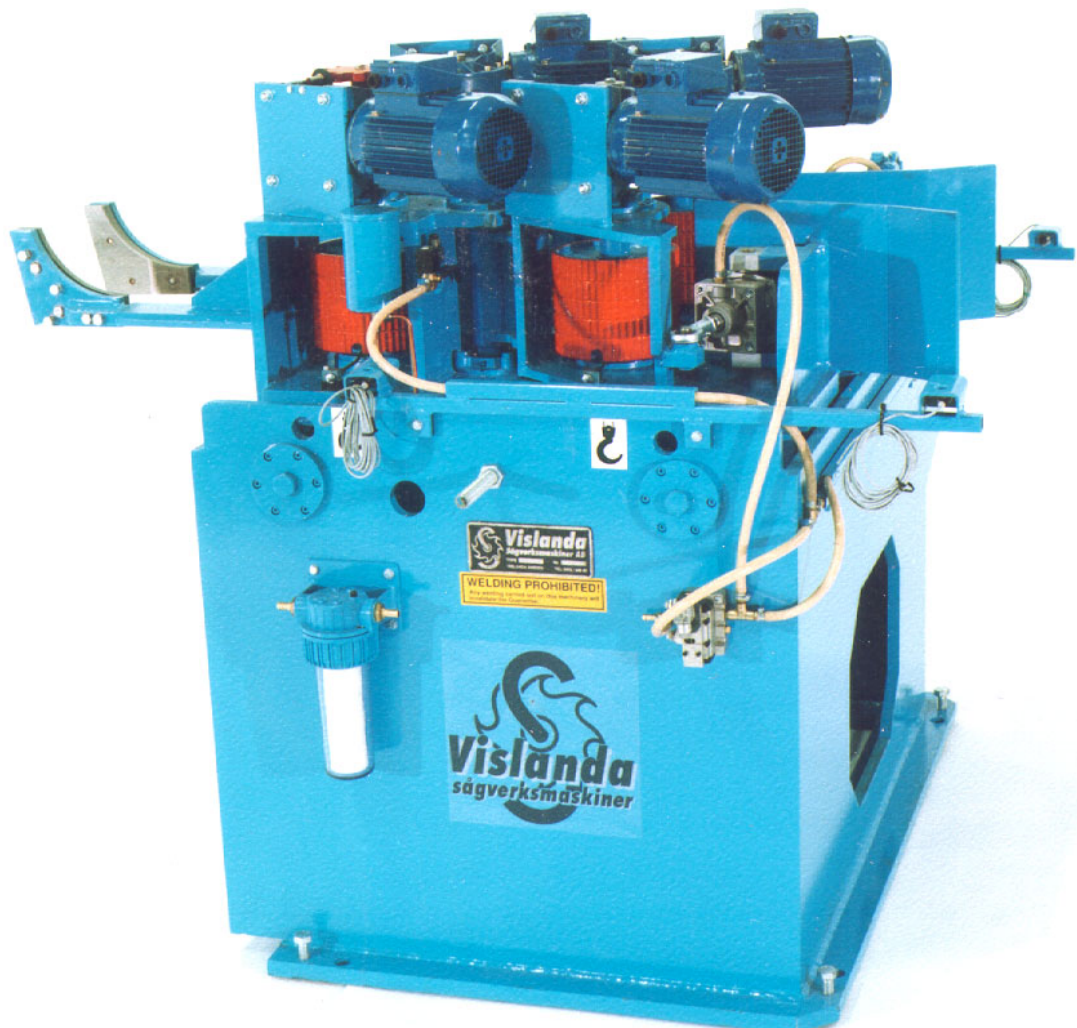
The feedwork is constructed of a box frame of welded steel plates. The vertical feedrollers (2+2) are mounted on two separate tables. The tables are carried by round guides. The sliding surfaces are lubricated in oil bath. The tables move

symmetrically around the centre line with a pneumatic cylinder and a parallel link system. The first pair of feedrollers are mounted on moveable arms.

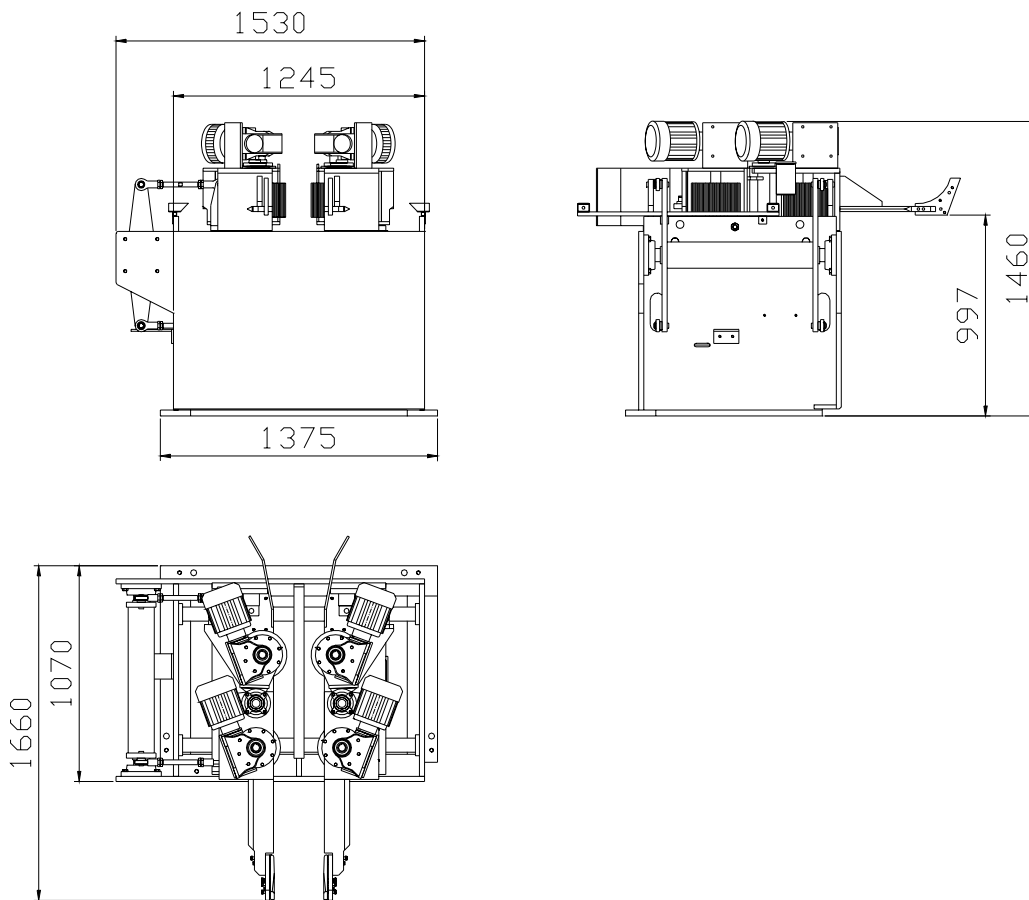
## Guide plates

Worm gear motors drive the feed rollers individually. The clamping pressure of the feedrollers are controlled by a pressure regulator.

Guide plates of steel ending in front of the saw blades guide the square to the following circular saw.



## Dimensions



## Technical data

Min./Max. cant width .....standard 70/530 mm  
Min./Max. cant height .....standard 75/265 mm

Air consumption ..... 10 l/cant  
Air pressure ..... 6 bar

## Power requirement

Rollers ..... 4x1.5 kW

Weight ..... approx. 2.2 ton

## Accessories

- Centring operation by hydraulic cylinders or hydraulic set works
- Hydraulic power pack for hydraulic centring

 **AriVislanda**  
SORB INDUSTRY

We reserve the right to make changes

Address  
AriVislanda AB  
Box 80  
SE-340 30 VISLANDA

Address  
AriVislanda AB  
Box 249  
SE-891 26 ÖRNSKÖLDSVIK

Phone, Vislanda  
+46 472 343 45  
Fax, Vislanda  
+46 472 343 49

Phone, Ö-vik  
+46 660 868 00  
Fax, Ö-vik  
+46 660 199 22

E-mail  
info@arivislanda.com  
Web  
www.arivislanda.com