

Cant infeder Nils



Infeder before the chipper canter

Conveyor for feeding and centring of 2-sided cant into a chipper canter. The conveyor can operate either straight sawing or sweep sawing depending on the shape cant.

The support construction is made of welded box-girders. Feeding is done by grooved solid rollers which are driven from a common chain transmission. The drive consists of an electric motor a reduction gear and a chain transmission.

Overhead pressure roller

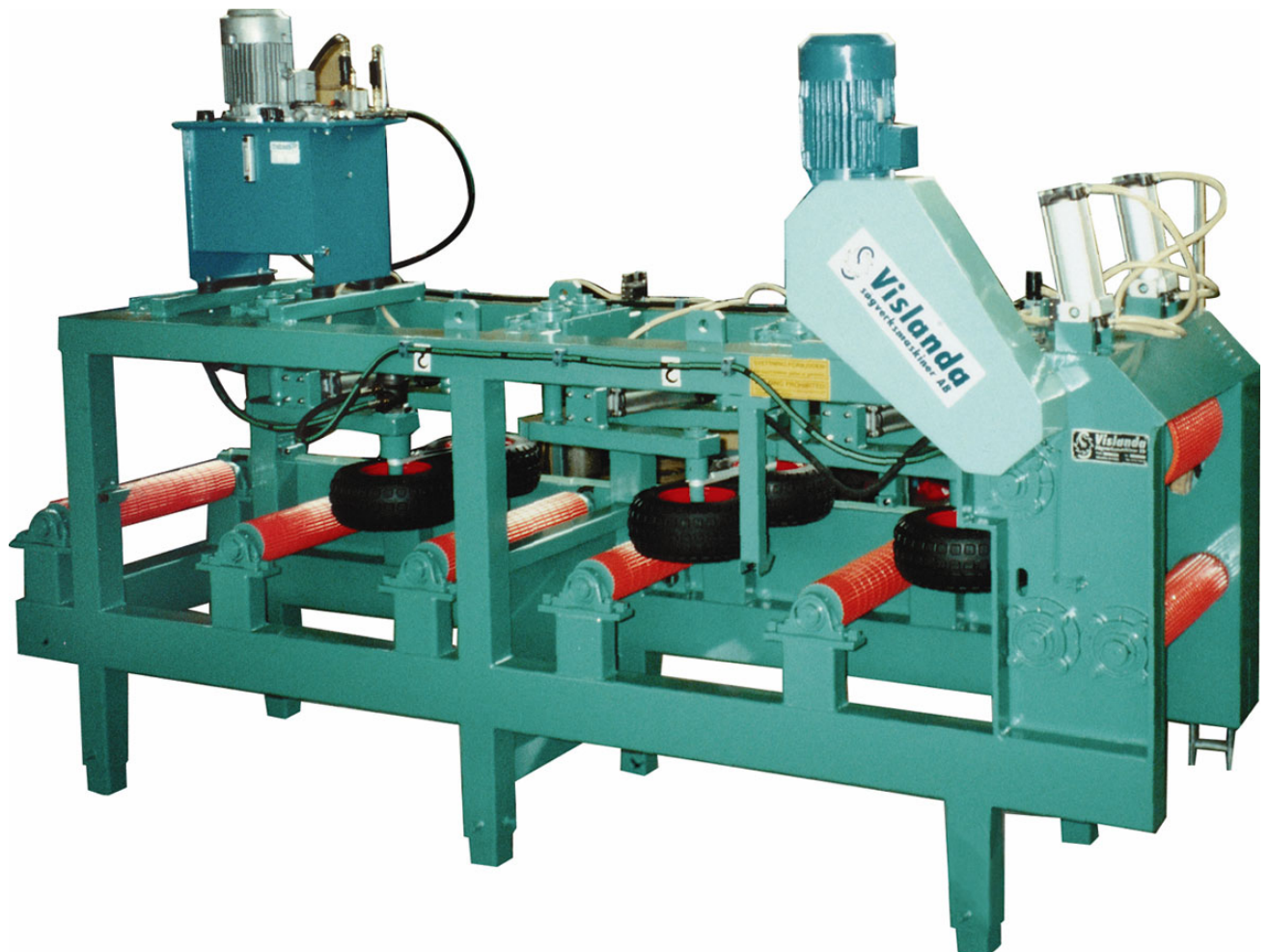
One overhead pressure roller is mounted in the frame of the conveyor just in front of the chipper canter. The roller has common drive with the

bottom feed rollers. The pressure roller is controlled by pneumatic cylinders.

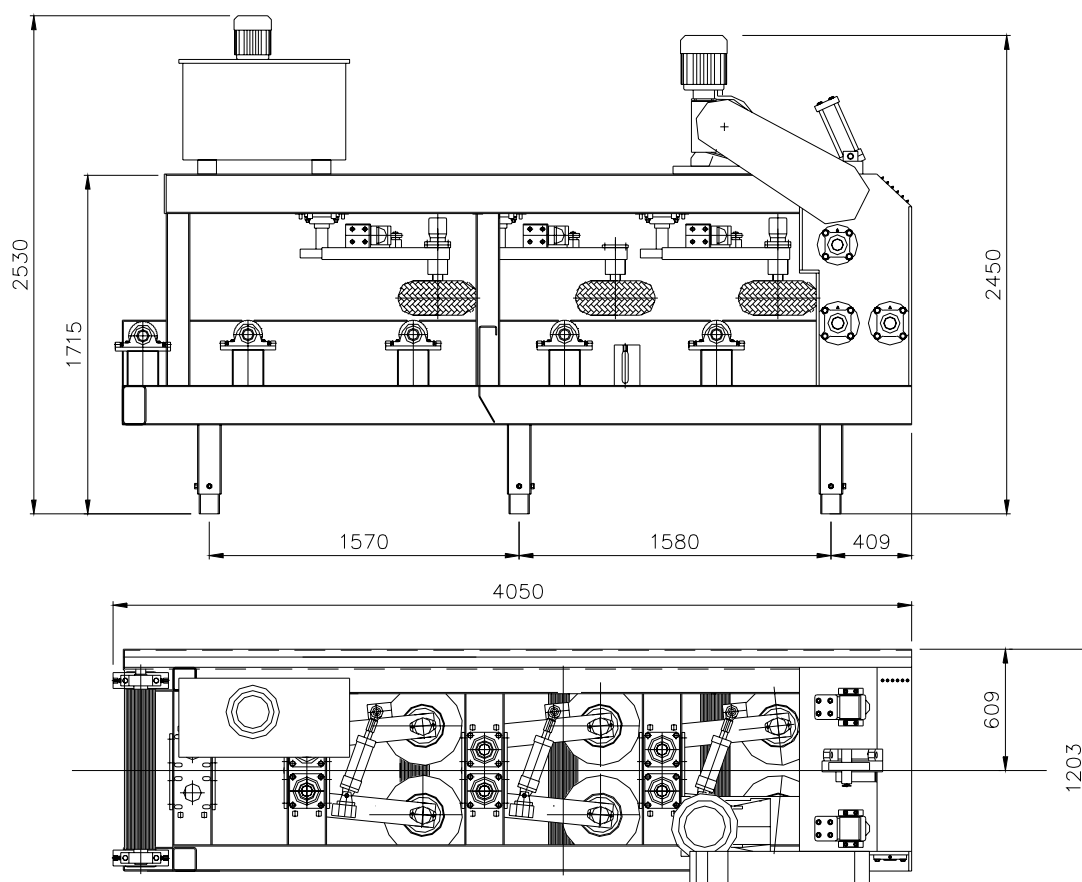
Centring rubber wheels

The centring and sweep sawing equipment consists of three or four pairs of rubber wheel controlled by pneumatic cylinders. The centring arms are centred by gear wheel for achieving an exact centring of the cants.

Two pairs of the centring wheels are driven by hydraulic motors. The hydraulic unit is mounted on the conveyors overhead frame.



Dimensions



Technical data

Min./Max. cant heightstd 70/265 mm

Max./Max. opening between centring wheelsstd 70/650 mm

Power requirements

Feed rollers5,5-7,5 kW

Centring wheels, hydraulic4,0 kW

Air requirement, free air at 6 bar 125 l/cant

Weight ca 5,6 ton

Accessories

- Solid rubber centring wheels
- Hydraulic cylinders on the centring wheel
- Drive on centring wheel by electric motors
- Top centring, places after pressure roller



We reserve the right to make changes

Address
AriVislanda AB
Box 80
SE-340 30 VISLANDA

Address
AriVislanda AB
Box 249
SE-891 26 ÖRNSKÖLDSVIK

Phone, Vislanda
+46 472 343 45
Fax, Vislanda
+46 472 343 49

Phone, Ö-vik
+46 660 868 00
Fax, Ö-vik
+46 660 199 22

E-mail
info@arivislanda.com
Web
www.arivislanda.com