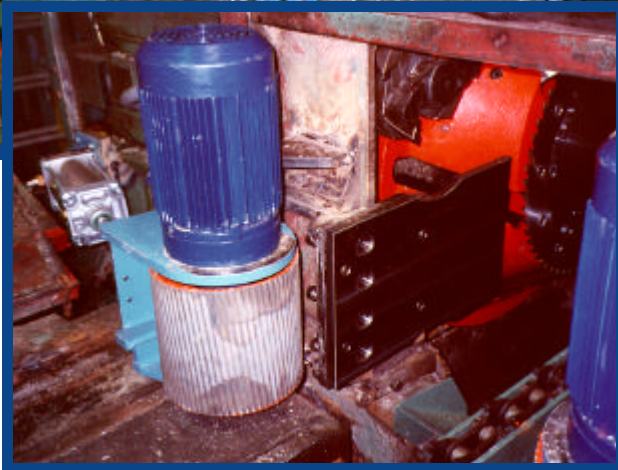
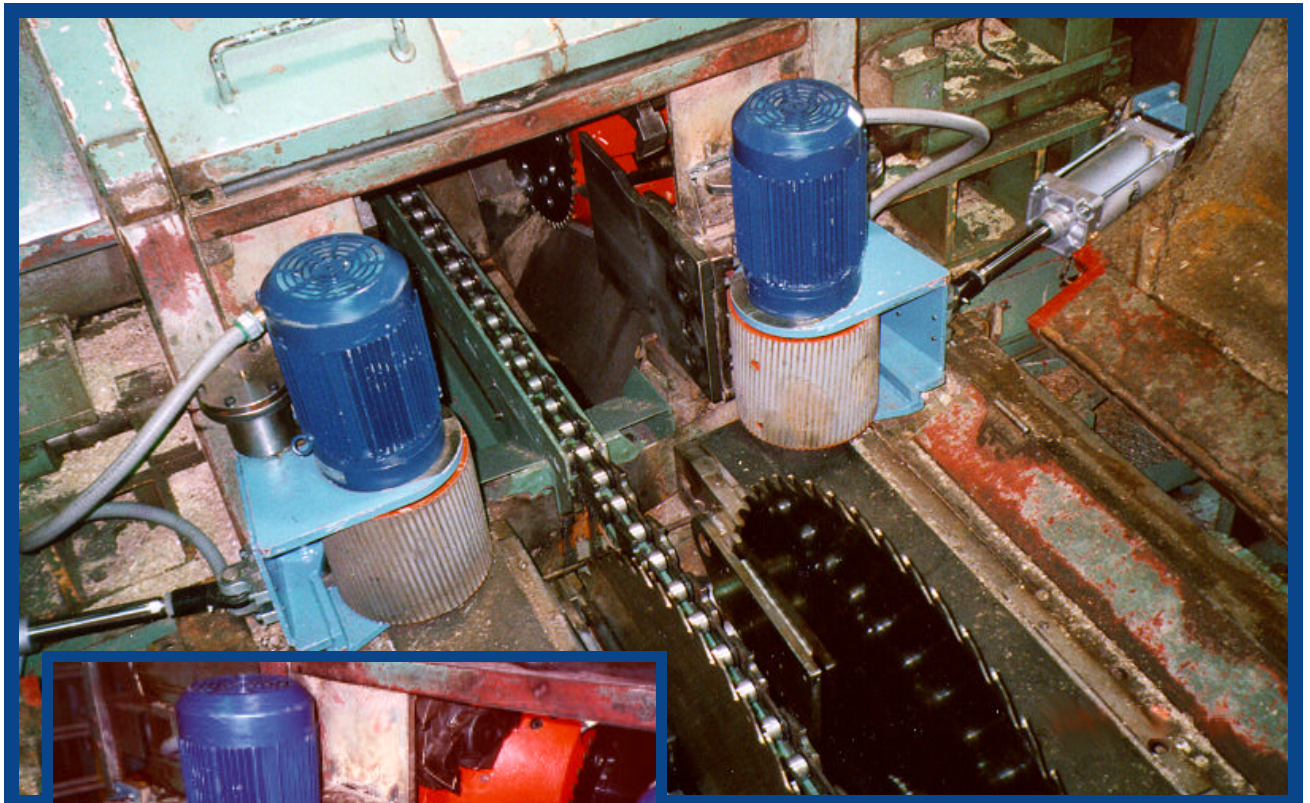


Outfeed rollers, SKR-600



The outfeed rollers are mounted after the guide plates on the canter and are driven by an electric motor, 4 kW, each. The diameter of the rollers can vary depending on the type of KS.

For more information, please contact AriVislanda After Sales.

By installing driven outfeed rollers between SKR-600 and KS you can improve the outfeed from SKR-600 and the guidance through the sawblades in KS.

With this upgrade you increase the availability and reliability in the machine group.