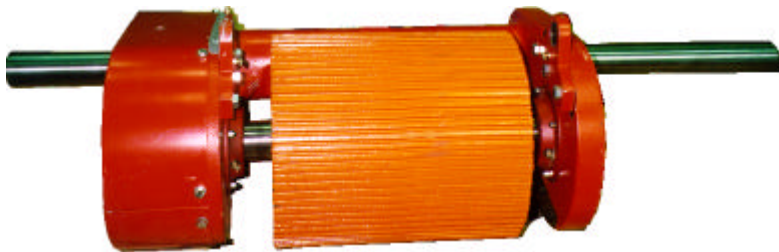


**High productivity demand high accessibility and this imply that spare parts are available.**

We at AriVislanda have noticed that and therefore we have given priority to approximately 1000 of the most frequent parts so they are always available in our stock.

To facilitate repairs we have even some exchange parts that are factory renovated and tested by us.

In this brochure we will show some small selections from our broad assortment.



Exchange rollers for Rotary Gang



Biosafe, vegetable oil for sawguides



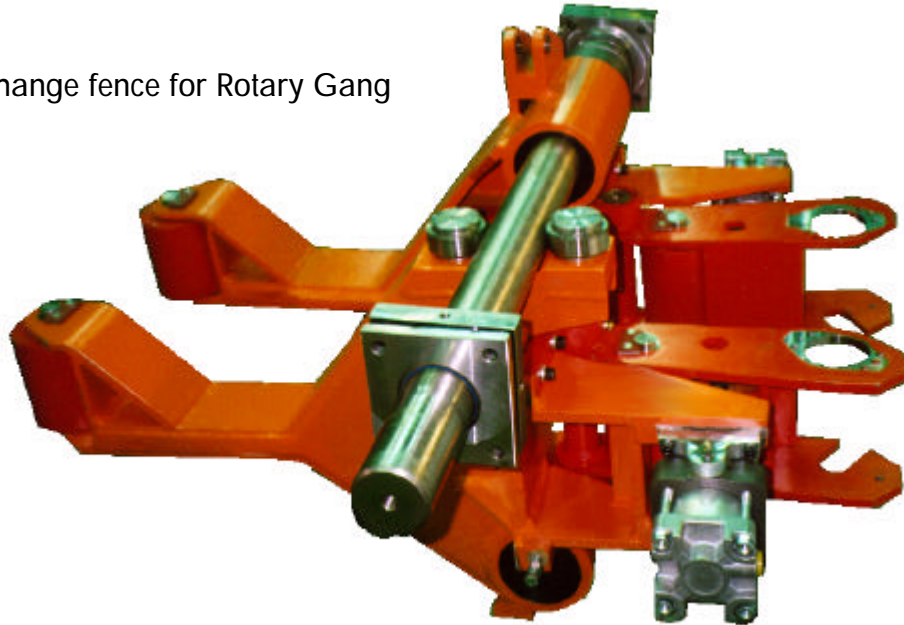
Aricur, biological degradable cleaner(excellent against resin and soot)



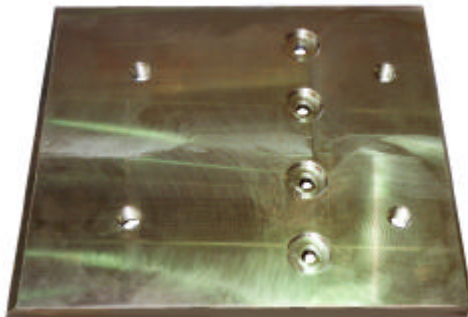
**Modernizations and improvements on the sawlines are often profitable.**

We have therefore developed some up-grading sets for our machines ex. Nobel hydraulic positioning servo system.

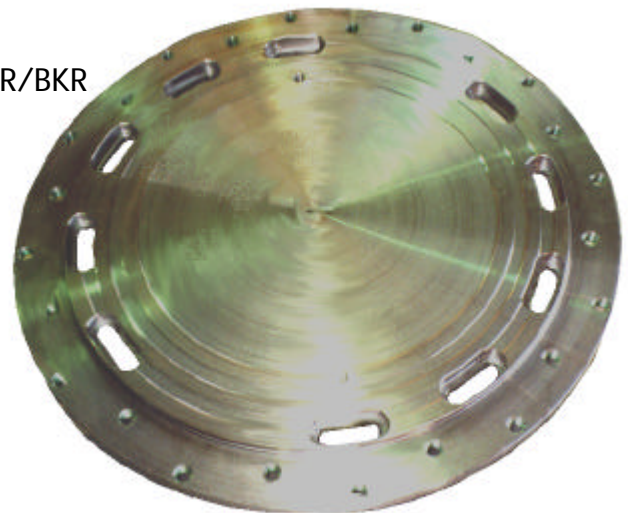
Exchange fence for Rotary Gang



Center disc for Chipper Canter SKR/BKR



Guide plain in Weldom to Chipper Canter SKR/BKR



Chip support in Hardox

If you want to know more about our spareparts and exchange units, please contact AriVislanda After sales dpt.



Örnsköldsvik      Vislanda  
Tel: +46 660-868 00      Tel: +46 472-343 45  
Fax: +46 660-199 22      Fax: +46 472-343 49  
E-mail: [info@arivislanda.com](mailto:info@arivislanda.com)  
Internet: [www.arivislanda.com](http://www.arivislanda.com)