

Cant turner CT-2



Turns in both directions

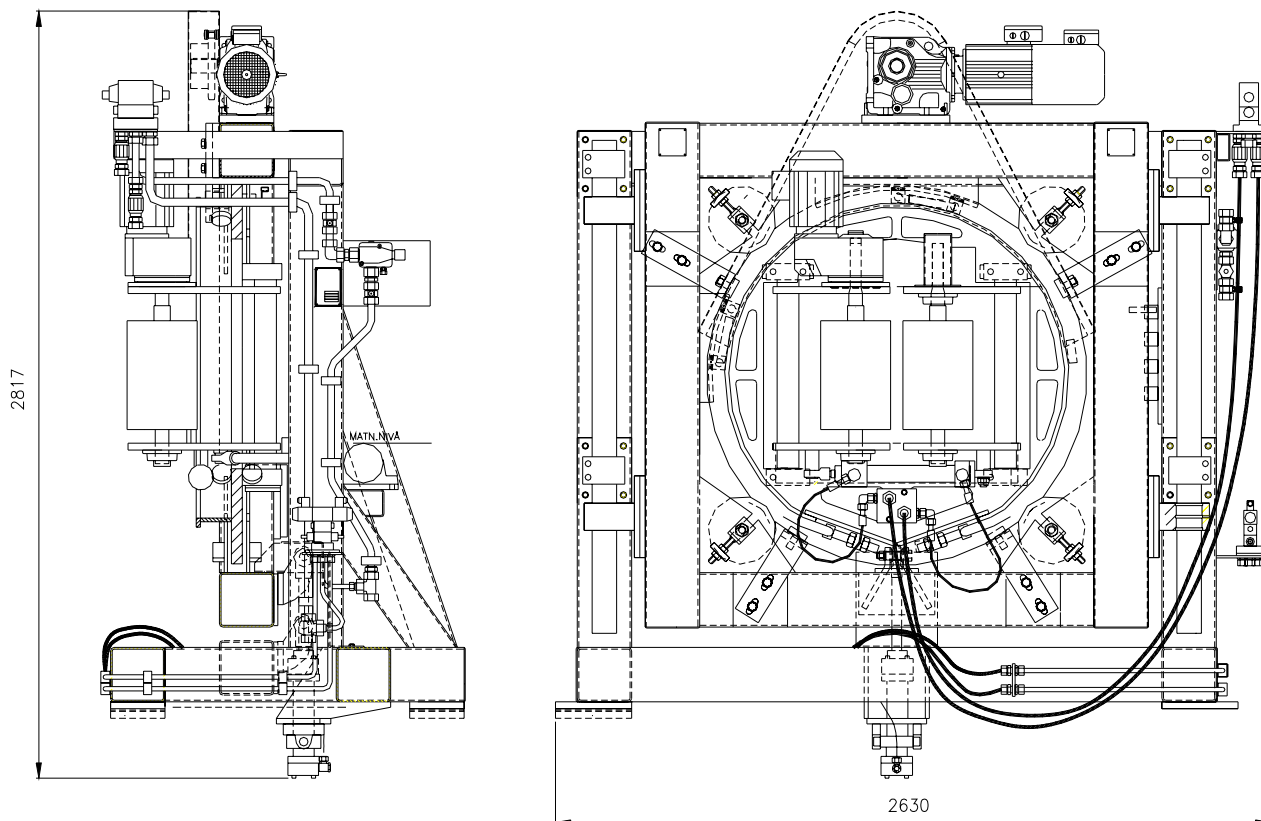
The cant turner has the ability to turn the cant in both directions, clockwise or counter clockwise, which gives optimal function in different sawmill layouts.

The gripping rollers are hydraulically operated and one of the rollers is driven by an electric motor.

The turning centre can be hydraulically adjusted according to current cant dimensions.



Dimensions



Technical data

Max. feed speed 120 m/min

Max. cant width 600 mm

Max. cant height 680 mm

Min. cant length, 100 m/min 2,7 m

Max no of turns ca 20/min

Electric motor power

Roller drive 3,0 kW

Cant turner 5,5 kW

Weight ca 2 ton



We reserve the right to make changes

Address
AriVislanda AB
Box 80
SE-340 30 VISLANDA

Address
AriVislanda AB
Box 249
SE-891 26 ÖRNSKÖLDSVIK

Phone, Vislanda
+46 472-343 45
Fax, Vislanda
+46 472-343 49

Phone, Ö-vik
+46 660-868 00
Fax, Ö-vik
+46 660-199 22

E-mail
info@arivislanda.com
Web
www.arivislanda.com