

# Cant turner CT-200



The Cant turner takes up the cants from the board separator and turns the cants over before feeding the cants forward to the following cant infeed.

The support construction consists of welded box-girders. Both sides of the cant turner conveyor have baffle plates mounted.

## Sharp chain and roller conveyor

The feeding of the cants before turn over is provided by a conveyor with a conveyor chain with toothed carriers.

The toothed chain is on the same level as the sharp chain in the board separator. The grooved solid rollers are placed 50 mm lower than the toothed chain. The centre of the chain is located 25 mm from the sharp chain in the board separator.

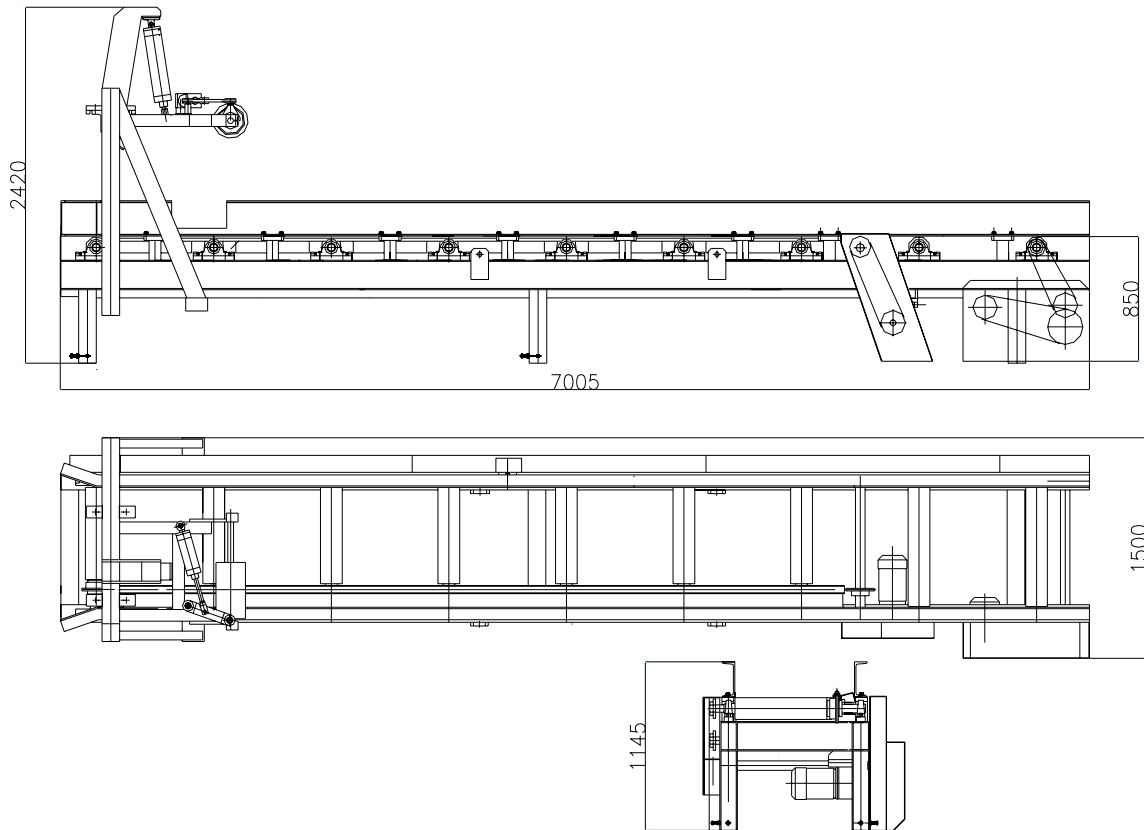
## Pressure roller

A overhead pressure roller with pneumatic shift makes the turn over of the cants safe. The roller is controlled by a pneumatic cylinder in it's vertical way.

The rollers and the toothed chain have separate drives. The chain is driven by a helicaled geared motor by a chain transmission. Feedrollers are driven by common chain transmission by a electric motor, v-belt and a pin gear.



## Dimensions



## Technical data

Min./Max. cant height .....std 70/650 mm

Max./Max. cant width.....std 75/300 mm

### Power requirements

Feed rollers ..... 3 alt 4 kW

Toothed chain ..... 3 alt 4 kW

Air requirement, free air at 6 bar .....50 l/log

Weight ..... approx. 4 ton

## Accessories

- Hydraulic operated arm mounted on the same side as the toothed chain (used with high speed and short log length)



We reserve the right to make changes

Address  
AriVislanda AB  
Box 80  
SE-340 30 VISLANDA

Address  
AriVislanda AB  
Box 249  
SE-891 26 ÖRNSKÖLDSVIK

Phone, Vislanda  
+46 472 343 45  
Fax, Vislanda  
+46 472 343 49

Phone, Ö-vik  
+46 660 868 00  
Fax, Ö-vik  
+46 660 199 22

E-mail  
info@arivislanda.com  
Web  
www.arivislanda.com